



FOR CLEAR AND LIVING WATER

TOTALLY CLEAR – OASE AQUAACTIV

Murky water and algae are things of the past. Discover the fast, effective, and above all, biologically sensible, solutions of the **OASE AquaActiv** pond care products in the new, innovative 3-step plan.



OASE – PASSIONATE ABOUT WATER.

»TOTALLY CLEAR –
OASE AquaActiv«



CONTENTS




INTRODUCTION

OASE AquaActiv	4
The 3-step plan	4
Copper in the garden pond	5

APPLICATION OVERVIEW

The OASE pond care schedule	6
-----------------------------	---

AQUAACTIV PRODUCTS

 Improving water quality	8
• BioKick fresh – starter cultures	8
• OptiPond – water quality	9
• Safe&Care – water treatment	10
• OxyPlus – lack of oxygen	11
• SediFree – pond silt	12
• PondClear – murky water	13
 Binding nutrients	14
• AquaHumin – pH value reduction and natural algae prevention	14
• PondLith – filter material for nutrient decomposition	15
• Phosless – phosphate	16
(algae prevention through regular nutrient withdrawal)	16
 Controlling algae	17
• AlGo universal – suspended algae (green water) & string algae	17
• AlGo Direct – local string algae	18
Fish care	18
• QuickFit – stress or injuries	18

OTHER

Water analysis	20
• QuickStick 6 in 1	20
• Professional water analysis set	20
The OASE Online Laboratory	21

OASE AQUAACTIV

For sustainable healthy,
living water

Help your pond to help itself – the AquaActiv pond care product range ensures sustainable, clear, living water with optimal values and healthy fish.

Simple product selection in the new **AquaActiv 3-step plan** now makes it even easier to effectively prevent and eliminate algae. With steps A and B you prevent excessive algae growth by stabilising the water quality and eliminating excess nutrients. In step C algaecides should only be used if steps A and B are unsuccessful. On the following pages you will learn which products are allocated to the different steps.



Improving
water quality



Binding
nutrients



Controlling
algae

Tip!

Our competence partner for water care products: For development of the OASE AquaActiv products you can rely on the expert knowledge of Dr. Herbert Rehms. The biologist, with his own research laboratory, is an expert in the fields of microbiology, water analysis, and botany.





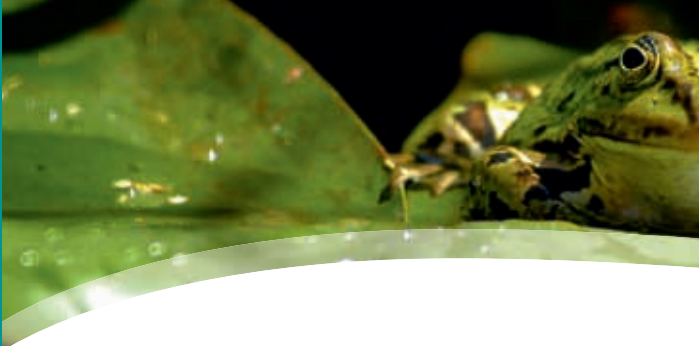
WITHOUT COPPER!

OASE feels an obligation to nature

Copper is a trace element and as such is an important nutrition component for many life forms. Among other things it is required for production of vital enzymes. But as the term »trace element« indicates, copper is only healthy in minute amounts. In higher concentrations it has a harmful effect on many forms of pond life.

OASE feels an obligation to nature, and due to the controversial side effects, foregoes the use of copper additives in all of its water care products. Naturally the product range does not include any devices that give off copper ions to the pond water.



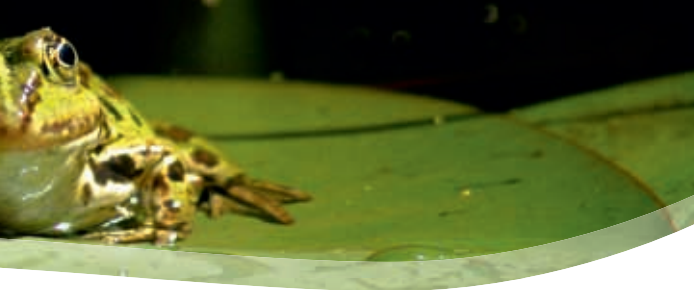


THE OASE POND CARE SCHEDULE

What, when, why ...

Significant temperature fluctuations, particularly in spring, can affect a pond temporarily. Falling leaves in autumn and the remains of dead plants offer algae an ideal nutrient basis. Artificial ponds are often too small and have too many fish to regulate themselves autonomously. The consequences – poor water quality, excessive algae / silt formation or even fish disease. The new AquaActiv care product range is perfectly adapted to the needs of the pond. It helps

		January	February	March	April	May
AquaActiv						
C	AlGo Universal					For treatment
	AlGo Direct					For treatment
B	PhosLess algae protection	Withdraws phosphates before algae occur				Preventative
	PondLith				Biological filter	
	AquaHumin				Biological	
A	BioKick fresh		For starting the pond biology after winter			
	SediFree	Sediment decomposition after winter				
	OxyPlus	For stimulation and vitalisation				
	PondClear			For mineral turbidity		
	OptiPond	Throughout the year, primarily in spring, but also in autumn, likewise if there is low calcium				
	Safe & Care	For refilling, changing water, fish stock, and after use of medication				



the pond regulate itself autonomously – for sustainable clear and living water.

The OASE pond care schedule shows you which product application is particularly recommended during which season. Thus, the pond gets precisely the support it needs throughout the year.

June	July	August	September	October	November	December	page
Treatment of acute algae problems							17
Treatment of acute algae problems							18
Preventive measure after algae treatments				Withdraws phosphates before algae occur			16
Filter medium for nutrient decomposition							15
Algal protection							14
For a new installation, acute problems, changing water without filter cleaning							8
After Spring			Sediment decomposition before winter				12
Immediate aid for lack of oxygen						Support in winter	11
Filter cleaning as well as suspended particles (not algae)							13
Filter cleaning immediately after heavy rainfall and before algae treatment, carbonate hardness and for pH value fluctuations							9
			For preparing the fish for the winter				10



BIOKICK FRESH

Clear water bacteria with freshness guarantee

BioKick fresh is ideally used in spring, for new filter systems, acute water problems, or after the use of medication. The microorganisms are freeze-dried, and in a gentle process only become activated after contact with the liquid nutrient solution. The cultures find optimal conditions, as well as settlement granulates, for becoming immediately active. You determine for yourself when the solution will be activated and when the highly active microorganisms will be used. The activity of millions of bacteria is indicated by the colour change. If the colour does not change due to lack of activity, we offer you a replacement package free of charge.

	BioKick fresh
Container size	500 ml
Suitable for ponds up to max. m ³	10.0
Description	<ul style="list-style-type: none"> • Long-lasting and highly active • Activation of millions of microorganisms just before application. This can be monitored through a colour change, and thus the functionality is guaranteed • Fast decomposition of ammonium / ammonia, nitrite and nitrate • Follow-up dose is not required • Colour indicator is harmless & biodegradable
Optimal supplements	OptiPond, Safe&Care
Item no.	50562

Note: The time period until the colour changes is temperature-dependent due to different bacterial activities!



OPTIPOND

Basic care agent for optimal water conditions

OptiPond stabilises the most important parameters of the water, such as Total Hardness, Carbonate Hardness (GH/KH) and the pH value. This means that dangerous drops in acidity are effectively prevented and pond water is supplied with vital minerals and trace elements. The result is an optimal pond climate; a climate that promotes the all-round well-being of fish. OptiPond is particularly recommended for algae treatments, when filling or refilling the pond or after periods of heavy rain.

	OptiPond	
Container size	500 ml	5 l
Suitable for ponds up to max. m ³	5.0	50.0
Description	<ul style="list-style-type: none">• Treats soft well water or rain water• Increases the carbonate hardness in exhausted water• Stabilises the most important parameters• Binds ammonium & ammonia• Prevents dangerous drops in acidity• Contains vital minerals and trace elements• Ideal after heavy rainfall	
Optimal supplements	Safe&Care	
Item no.	50557	50558

Note: Product is marked »irritant«.

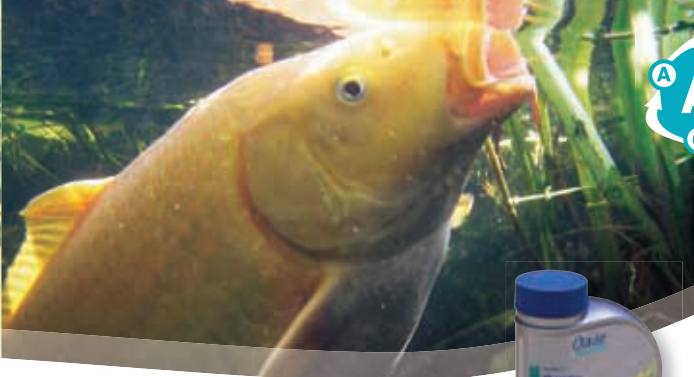


SAFE&CARE

Water treatment with mucous membrane protection

That which is presumed to be fresh water is often too aggressive for fish and other pond inhabitants. **Safe&Care** sustainably binds and neutralises toxic heavy metal residues and removes toxic chlorine. In addition it stabilises the pH value. The bio-protection colloids strengthen the mucous membrane of fish and protect it from injury and parasite infestation. If there are toxicity symptoms, such as lurching movements or loss of appetite, **Safe&Care** can even prevent loss of fish. **Safe&Care** should be added each time the pond is refilled and when greater amounts of pond water are changed.

	Safe&Care
Container size	500 ml
Suitable for ponds up to max. m ³	10.0
Description	<ul style="list-style-type: none">• Makes tap water suitable for fish and biotope• Binds chlorine and toxic heavy metals• Bio-protection colloids protect the mucous membrane from injury and infection• Ideal after the use of medication
Optimal supplements	OptiPond
Item no.	50563



OXYPLUS

Immediate oxygen aid
with lasting effect

OxyPlus contains active oxygen with a lasting effect that allows vital oxygen to penetrate deep into the pond. Thus the dreaded formation of fermentation gases can be avoided. Adding OxyPlus regularly can significantly improve the biological self-cleaning effect. **OxyPlus** is also recommended for strong algal bloom, to alleviate oxygen deficiency that particularly occurs at night.

	OxyPlus
Container size	500 ml
Suitable for ponds up to max. m ³	10.0
Description	<ul style="list-style-type: none">• Increases the oxygen content in the pond• Prevents formation of hazardous fermentation gas• Supports the biological self-cleaning properties of the water• Ideal for lack of oxygen e.g. if there is heavy algal bloom
Optimal supplements	OptiPond
Item no.	50559

Note: Product is marked »irritant«.



SEDI FREE

Pond silt remover



SediFree has a dual effect, the granulate sinks into the silt and releases the oxygen that is bound there. The special bacteria contained in the product become active in the water and thus optimally mineralise the oxidised silt. Thus, healthy pond water is produced without unsightly deposits or fermentation gasses. Likewise, excess algae growth is also prevented through the decomposition of nutrients dissolved in the silt.

	SediFree	
Container size	500 ml	5 l
Suitable for ponds up to max. m ³	10.0	100.0
Description	<ul style="list-style-type: none"> • Transformation of organic silt via special high-performance bacteria • Gentle cleaning without refilling the pond or dredging, etc. • Focused prevention of silt, long-term turbidity, and algal bloom • Granulate with active oxygen sinks into the silt and oxidises it. Subsequent rapid decomposition of the silt through special bacteria 	
Optimal supplements	OxyPlus, OptiPond	
Item no.	50560	50561

Note: Product is marked »irritant«.



POND CLEAR

For crystal clear pond water

Clears water safely and quickly, frees it of floating, turbidity-causing particles and thus increases visual depth.

PondClear not only binds mineral turbidity induced through clay particles and potting soil, it also binds organic turbidity caused by fish waste or the remains of dead plants. Including pH/GH quick test for a safe application.

Not recommended for algae control!

AlGo Universal is recommended against green water (suspended algae).

	PondClear	
Container size	500 ml	5 l
Suitable for ponds up to max. m ³	10.0	100.0
Description	<ul style="list-style-type: none"> • Binds mineral substances that cause turbidity • Binds organic substances from fish waste or leaves that cause turbidity • Effective against fine, non-filterable pollutants such as phosphates and heavy metal combinations • Accumulated flocculated material can be easily skimmed off with a net • Not suitable for algae control 	
Optimal supplements	OptiPond	
Item no.	50552	50555



AQUAHUMIN

Biological algae protection and
pH value reducer



Special peat for garden ponds – free from chemical additives, nematodes, pathogens and substances that are toxic to plants. Softens the water and reduces the pH value. The high proportion of humic acid acts as a natural algae preventative.

	AquaHumin
Container size	10 l
Suitable for ponds up to max. m ³	10.0
Description	<ul style="list-style-type: none">• Special peat for the garden pond• Free from chemical additives, nematodes, pathogens and substances that are toxic to plants• 30 % – 45 % humic acid• Softens the water and reduces the pH value• Restores the biological balance• Prevents excessive algae growth
Item no.	53759



POND LITH

A natural product with Zeolite-based filter material

Zeolite is a natural filter medium with an extremely large inner surface. Thus, pollutants, such as ammonium, are decomposed with particular efficiency. In addition, pollutants are actively bound on the Zeolite and are removed from the pond at replacement.

	PondLith
Container size	2.5 kg
Suitable for ponds up to max. m ³	2.5 / 1.25 (with fish stock)
Description	<ul style="list-style-type: none">• Zeolite-based natural product• Special high-performance filter material• For decomposition of ammonium, nitrite and nitrate• Grain size 5 – 10 mm• Withdraws the nutrient base for green algae• Effective for approximately 125 days• Quantity per m³ pond volume<ul style="list-style-type: none">1 kg (without fish stock)2 kg (with fish stock)3 kg (for koi ponds)
Item no.	54049



PHOSLESS

Natural algae prevention through nutrient binding

Phosphates are a principle nutrient for algae and thus are responsible for excessive algae growth. One PhosLess combination pack binds the phosphate from up to 5 kg of fish food, through an effective 2-component technology. The phosphates are sustainably removed from the pond through the exchange system.

	PhosLess	PhosLess refill pack
Container size	2 l filter media tubes	2 l bags
Suitable for ponds up to max. m ³	40.0/10.0 (with fish stock)	40.0/10.0 (with fish stock)
Description	<ul style="list-style-type: none"> • Binds excess phosphates and thus naturally reduces algae growth • Binds harmful heavy metals like copper, lead or zinc • Can be used in the Biotec 12/18/36 filters as well as in moving water 	<ul style="list-style-type: none"> • 15 x 2 l bags PhosLess CA and PhosLess FS • Suitable for use in larger bodies of water • Replacement medium for PhosLess filter media tubes • Can also be directly applied in moving water
Item no.	36981	57477



ALGo UNIVERSAL

Universal algae control



ALGo Universal is safely effective against the most frequently occurring algae types, string algae, suspended algae, and slime algae, without persistently damaging the pond ecosystem. Algae organism and metabolism are specifically attacked and photosynthesis is inhibited. Algae dies off gradually. Thus, with regular use, further algae growth can be effectively prevented.

	ALGo Universal	
Container size	500 ml	5 l
Suitable for ponds up to max. m ³	10.0	100.0
Description	<ul style="list-style-type: none">• Inhibits photosynthesis of the algae; algae starves• Effective without controversial copper additives• Harmless for plants and animals when used properly• Specifically effective against duckweed• Prevents further algae growth	
Optimal supplements	OptiPond, PhosLess	
Item no.	50542	50545

Use **algaecides** safely! Always read the label and product information before use!



ALGo DIRECT

String algae control – effective on contact



ALGo Direct is primarily used for fast and local control of string algae clumps. Remains of dead algae will then be decomposed by microorganisms. Because the active ingredient is free of biocides and heavy metal additives, ALGo Direct can also be used directly in the swim pond.

	ALGo Direct	
Container size	500 ml	5 l
Suitable for ponds up to max. m ³	10.0	100.0
Description	<ul style="list-style-type: none"> • Particularly for local and fast treatment of string algae, e.g. in watercourses • Works through direct contact • Includes pH/GH quick test • Active ingredient decomposes to oxygen and water within a short time, consequently use in swim ponds is possible • Effective without controversial copper additives • Product is marked »harmful to health«! 	
Optimal supplements	OptiPond, PhosLess	
Item no.	50546	50549

Use algaecides safely! Always read the label and product information before use!
Product is marked »harmful to health«!



QUICKFIT

Makes fish fit faster

With Clear Water Guarantee*! The combination of valuable aloe vera extract, vital trace elements and vitamin C significantly strengthens the immune system and vegetative nerve system of your fish and reduces susceptibility to disease. Aloe vera has an infection-inhibiting effect and rests gently on the skin like a bandage. This helps wounds to heal faster and the risk of infection is reduced. After treatment pond fish are under less stress, are more vital, show visible signs of wellness and more brilliant colours.

Ideal for new stock, transport, after recovery from disease or injury.

	QuickFit
Container size	500 ml
Suitable for ponds up to max. m ³	10.0
Description	<ul style="list-style-type: none"> • With valuable aloe vera extract, trace elements and vitamin C • Strengthens the immune system and reduces susceptibility to disease • Reduces stress and enhances well-being • Ideal for new stock, transport, after recovery from disease or injury
Optimal supplements	Safe&Care
Item no.	50569



WATER ANALYSIS

Always keep the important values in sight



The OASE test sets provide you with a constant and clear overview of the quality of your water. Thus, occurring problems can be detected early on and countermeasures can be initiated before fish are harmed or plants are damaged.

	QuickStick 6 in 1	Professional water analysis set
Description	<ul style="list-style-type: none"> • For fast, simple, and reliable water analysis of the 6 most important water values • One minute is all it takes • Suitable for testing approximately 50 water samples (300 parameters) 	<ul style="list-style-type: none"> • Professional drop solutions for precise determinations of all important pond parameters • Phosphate test incl. service life check solution • Incl. measurement accessories, colour charts, and useful application instructions

Simple and accurate determination of:

pH value	•	•
Total hardness (GH)	•	•
Carbonate hardness (CH)	•	•
Nitrite (NO ₂)	•	•
Nitrate (NO ₃)	•	•
Phosphate (PO ₄)	–	•
Ammonium (NH ₄)	–	•
Ammonia (NH ₃)	–	•
Chlorine (CL ₂)	•	–
Item no.	50570	50571



THE OASE ONLINE LABORATORY

Your direct path to ideal water values

Use the immediate aid for your water parameters! In the new OASE Online Laboratory you learn everything worth knowing about your water parameters, around the clock. Simply enter your analysis parameters to obtain a free-of-charge, detailed evaluation with helpful tips.



©²

ANTIWORM

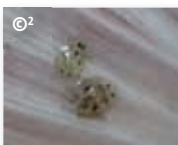
Against fish lice, as well as skin worms, gill worms, and tapeworms

Area of application

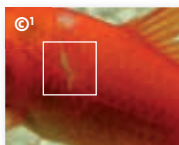
The ideal treatment for parasitic worm or fish lice infestation. Helps for fish lice (*Argulus*), anchor worms (*Lernaea*), skin worms (*Gyrodactylus*), gill worms (*Dactylogyrus*), tapeworms (*Cestoden*)

Symptoms

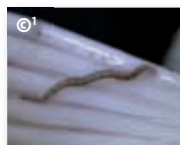
Increased respiratory activity, emaciation in spite of normal feeding behaviour, heavy abrasion; fish lice and anchor worms can be seen with the naked eye.



Fish lice



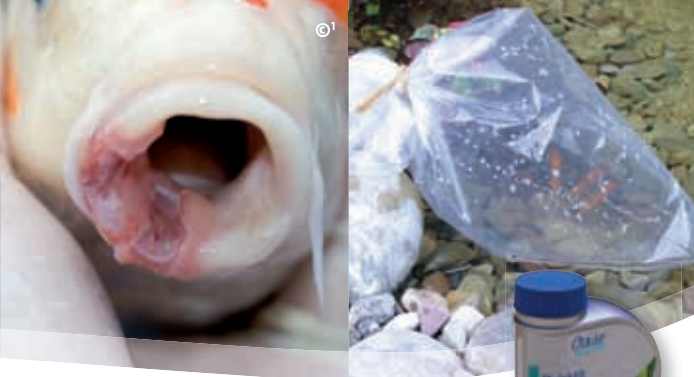
Anchor worm



Fish leech

	AntiWorm
Container size	500 ml
Suitable for ponds up to max. m ³	10.0
Optimal supplements	QuickFit
Item no.	50567

Active ingredient: Diflubenzuron | Over-the-counter medication in accordance with § 60 of the German Drug Act (AMG)



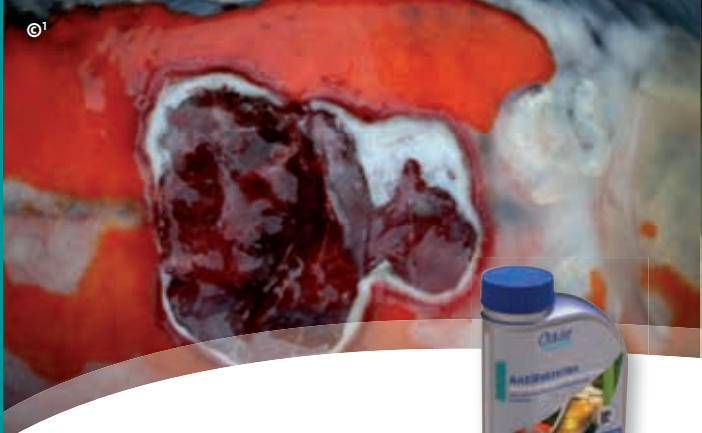
AQUAACTIV QUICKFIT

Makes fish fit faster

Even if your fish have now overcome their disease and are on the way to recovery, they still remain weakened for a time. AquaActiv QuickFit is specially recommended as optimal support for your fish during this period. The triple combination of valuable aloe vera extract, vital trace elements and vitamin C significantly strengthens the immune system and vegetative nerve system of your fish and particularly reduces relapse susceptibility.

After treatment pond fish are under less stress, are more vital and show visible signs of wellness. Likewise AquaActiv QuickFit is recommended for new fish stock, after transport, or after changing the water.

	QuickFit
Container size	500 ml
Suitable for ponds up to max. m ³	10.0
Optimal supplements	Safe&Care
Item no.	50569



ANTIBACTERIA

Against internal and external bacterial infections

Area of application

Internal as well as external bacterial infections can be treated with this medication. AntiBacteria helps with ascites, columnaris, aeromonas, and streptococci.

Symptoms

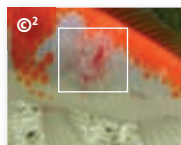
Loss of skin & scales, swelling / reddening, break out extending to crater-like recesses, wounds with or without reddening of the surrounding tissue, ulcers, fin disorders, slowed or accelerated movements, shakiness, cramps, general darkening, protuberant bellies in conjunction with patchy fins.



Ascites



Fin rot



Break-outs

	AntiBacteria
Container size	500 ml
Suitable for ponds up to max. m ³	10.0
Optimal supplements	QuickFit
Item no.	50568

Over-the-counter medication in accordance with § 60 of the German Drug Act (AMG)

©²

ANTIFUNGUS

Against fungal infections

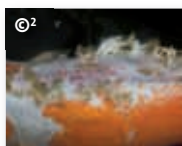


Area of application

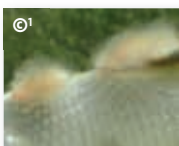
Fungal diseases frequently occur in pond fish that are already weakened and that have damaged skin. This can particularly occur during the spawning season. With its anti-bacterial components AntiFungus also prevents accompanying infections.

Symptoms

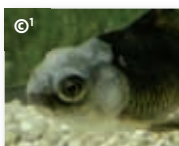
Batting-like covering on gills, body and fins. In the late stage, frequently secondary bacterial infections follow. Whitish brownish covering on wounds.



Fungal infection (back)



Mould



Fungal infection (head)

	AntiFungus
Container size	500 ml
Suitable for ponds up to max. m ³	10.0
Optimal supplements	QuickFit
Item no.	50566

Over-the-counter medication in accordance with § 60 of the German Drug Act (AMG)



UNIVERSAL

Against the most frequent diseases of pond fish

Area of application

Universal is the ideal medication for unclear diagnosis, mixed infections or for preventative treatment. Effective against bacteria, protozoa and fungal diseases.

Symptoms

Whitish to yellowish, slimy, or cotton-wadding like coverings, ulcers, wounds, inflammation, blood spots, loss of skin and scales, fin rot, grey skin disease, white mouth, lurching and protruding eyes.



©²
Skin parasites



©¹
White-spot disease



©¹
Fungal infection

	Universal
Container size	500 ml
Suitable for ponds up to max. m ³	10.0
Optimal supplements	QuickFit
Item no.	50564

Over-the-counter medication in accordance with § 60 of the German Drug Act (AMG)



ANTI PARASITE

Against single-cell parasites

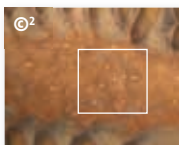


Area of application

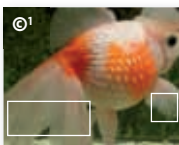
AntiParasite is the optimal medication against external parasites (protozoa, skin parasites), and their accompanying diseases. This helps against Ichthyobodo (Costia) Trichodina, Hexamita Cryptobia and Chilodonella.

Symptoms

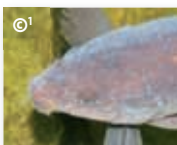
White-grey to dark velvet-like coverings or tiny, barely visible spots. Projecting gills, increased respiratory activity, breathing difficulty, excessive rubbing against objects, clamped fins, apathy & emaciation.



White-spot disease



White-spot disease



Skin parasites

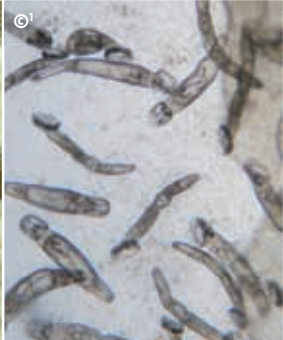
	AntiParasite
Container size	500 ml
Suitable for ponds up to max. m ³	10.0
Optimal supplements	QuickFit
Item no.	50565

Over-the-counter medication in accordance with § 60 of the German Drug Act (AMG)

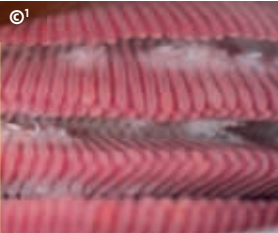
MULTI-CELLULAR PARASITES



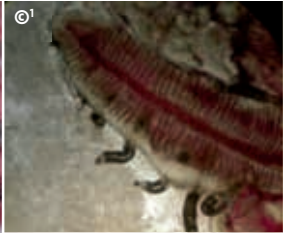
Anchor worm (Lernaea)



Skin worm (Gyrodactylus)



Gill worms (Dactylogyrus)



Tapeworm (Emaciation)



Fish leech



Fish lice (Argulus)

STEP 3:

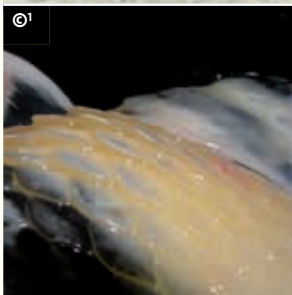
Specific treatment

Disease	Treatment with
Aeromonas / Pseudomonas	AntiBacteria
Anchor worm (Lernaea)	AntiWorm
Apiosoma / Epistyllis	AntiParasite
Woodlice	AntiWorm
Break-outs	AntiBacteria
Tapeworm	AntiParasite
Ascites / raised scales	AntiBacteria
Chilodonella	AntiParasite
Columnaris disease	AntiBacteria
Erythrodermatitis	AntiBacteria
Fish leech	AntiWorm
Fin rot	AntiBacteria
Spring viraemia	Universal
Skin parasites	AntiParasite
Skin worm (Gyrodactylus)	AntiWorm
Ichthyobodo necator (costia)	AntiParasite
Fish lice (Argulus)	AntiWorm
Gill rot (bacterial)	AntiBacteria
Gill maggots (Ergasilus)	AntiWorm
Gill worms (Dactylogyrus)	AntiWorm
Mixed infection	Universal
White-spot disease (Ichthyophthirius)	AntiParasite
Velvet (Piscinoodinium)	AntiParasite
Mould	AntiFungus
Trichodina, Tetrahymena	AntiParasite
Injuries	AquaActiv QuickFit
Injuries, inflamed	AntiBacteria, AquaActiv QuickFit
Injuries, fungal infestation	AntiFungus, AquaActiv QuickFit
Fungal infections (Mykose)	AntiFungus

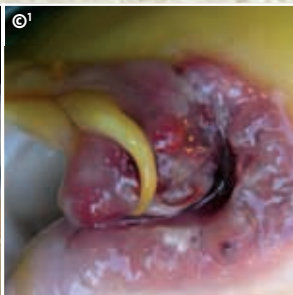
BACTERIAL INFECTIONS



Break-outs



Ascites
Raised scales

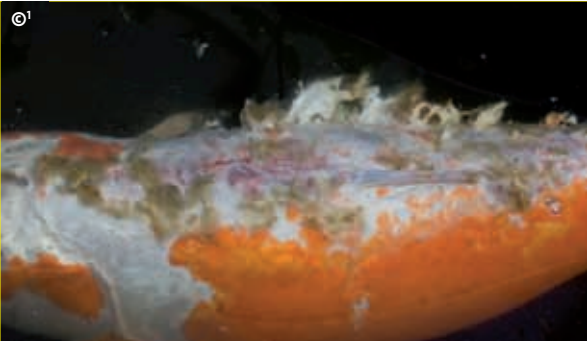


Injuries, inflamed



Fin rot

FUNGAL DISEASES



Fungal infection (back)



Fungal spores



Mould



Fungal infection (fins)



Fungal infection (head)

MIXED INFECTIONS

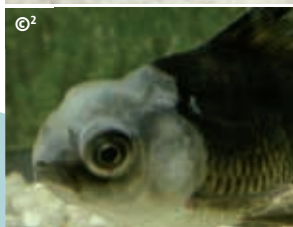
Often there is an overlay of symptoms or pathogens when diagnosing a disease. For example, weakened animals with parasitic infestations frequently already show accompanying bacterial infections or fungal infections. In these cases of so-called mixed infections and also for unclear diagnoses, we recommend the use of the Universal treatment.

Fast healing for mixed infections!

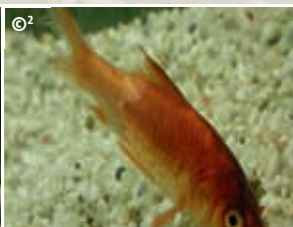
The products Universal, AntiParasite, AntiBacteria and AntiFungus contain special components to suppress accompanying bacterial infections. Thus, micro-injuries, e.g. caused by parasites, are protected against dangerous infections.



Break-outs



Fungal infection (head)



Fin rot

AGAINST SINGLE-CELL PARASITES

Single-cell parasites – protozoa



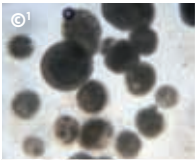
White-spot disease (Ichthyophthirius)



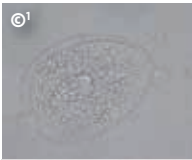
White-spot disease (Ichthyophthirius)



Trichodina



Ichthyophthirius



Chilodonella



Skin parasites



THE RIGHT TREATMENT

for your pond fish

Step 2: Make a diagnosis

If you have the possibility of catching the fish, you can examine the affected parts. The illustrated diagnostic aid on the following pages supports you in assigning the probable disease of your fish.

Step 3: Specific treatment

OASE offers special, over-the-counter preparations for many diseases. If the diagnosis is correct, these medications are significantly more effective than broadband medications. Universal medications should only be used if the diagnosis is unclear or for mixed infections.

Step 4: Aftercare

Often skin injuries remain after the disease has been survived. With AquaActiv QuickFit these wounds close quickly and further infection is avoided.

Tip!

Our recommendation for difficult cases:

Dr. Achim Bretzinger, veterinary specialist for fish

www.koipraxis.de

STEP 2:

Diagnosis of the disease

In order to precisely determine parasitic diseases, in particular, ideally you should take a skin smear of the affected regions. **With the aid of a microscope** you or your stockist can now make a reliable diagnosis and select suitable medication for the treatment.



Gill worm



Trichodina

The most frequent diseases are listed on the following pages. The table on page 13 shows you the suitable OASE products for optimal treatment at a glance.

OASE FISH MEDICINE

Fit & healthy

Proper enjoyment of the garden pond is only possible with healthy and lively pond inhabitants. But how can you support the fish when they are not doing well? In close collaboration with the company, Aquarium Münster, OASE has developed special products for the health and well-being of your fish. The new highly-effective series of medications fights many types of diseases. Whether parasite infestation, fungal infestation or worm infestation, bacterial infection or mixed infection, the OASE fish medicine offers highly effective and reliable products.

An overview of the right steps, from diagnosis of the disease to suitable treatment with the products from the OASE product range, is provided on the following pages.

Tip!

Our competence partner for pond medicine: The OASE fish care products have been developed in cooperation with Aquarium Münster Pahlsmeier GmbH. The OASE competence partner has more than 80 years experience in the keeping and medication-based treatment of ornamental fish.



**Aquarium
Münster**

Fish like us



THE RIGHT TREATMENT

for your pond fish

Step 1: Recognise abnormalities

Always observe your animals carefully. If animals show an abnormal behaviour over several days, such as loss of appetite or constantly rubbing themselves against objects, usually something is wrong.

Bear in mind that every animal with abnormal behaviour is not necessarily infected with a pathogen. Toxic symptoms and lack of oxygen can also be responsible for sudden and widespread fish deaths. Prior to treatment with medication, you should always be able to exclude the following points:

Possible poisoning due to:

- Ammonium / ammonia and nitrite (check water values regularly)
- Copper (e.g. through algacides)
- Overdosing of algacides or medication
- Plant protection agents or other chemicals from the immediate vicinity of the pond

Possible lack of oxygen in the pond:

- Animals gasping for air

*»FIT AND HEALTHY –
OASE FISH MEDICATION«*



CONTENTS

INTRODUCTION

OASE fish medicine	04
--------------------	----

TREAT POND FISH CORRECTLY

Step 1: Recognise abnormalities	05
Step 2: Make a diagnosis	07
• Mixed infections	08
• Single-cell parasites	09
• Bacterial infections	10
• Fungal diseases	11
• Multi-cellular parasites	12
Step 3: Specific treatment	13
• Overview table	13
Products	14
• Universal	14
• AntiParasite	15
• AntiBacteria	16
• AntiFungus	17
• AntiWorm	18
• QuickFit	19



FOR HEALTHY AND LIVELY FISH

FIT & HEALTHY – OASE FISH MEDICINE

In 4 steps, this compact advisor shows how to ideally treat fish if there is disease – from the diagnosis to the suitable product recommendation from the new, highly-effective and reliable, **OASE fish medicine product range.**

