



	Fresh Water	Pool Water	Sea Water	220-240 V	400 V	110-120 V	50 Hz	60 Hz	12 V AC	24 V DC	DMX	DMX/RDM	Plug and Spray
SPA 22 - SPA 280													

* Pool-, seawater product version on request

SPA 22 - SPA 280

These multistage structured submersible motor-driven pumps are the powerful heart for high delivery heads.

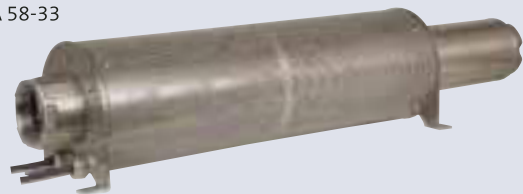
These pumps can supply single fountains as well as group fountains with sufficient water volumes and pressure for larger spray heights. Thus they are preferred in installations in which the delivery head of single-stage pumps are no longer required.

*Contact OASE before ordering a Pool or a Sea Water SPA pump. Technical specifications of this model (58903) may vary.

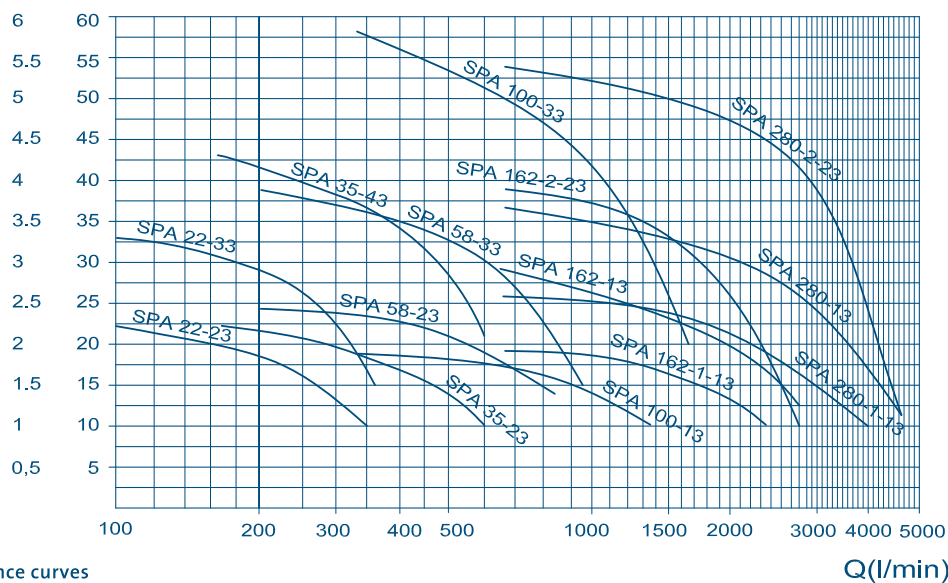
Product characteristics at a glance

- Extremely shallow and slender design
- Multistage submersible motor pump
- Suitable for higher delivery heights
- High-volume filter basket
- Good stability
- Robust wet-running canned motor
- All parts made of stainless steel

SPA 58-33

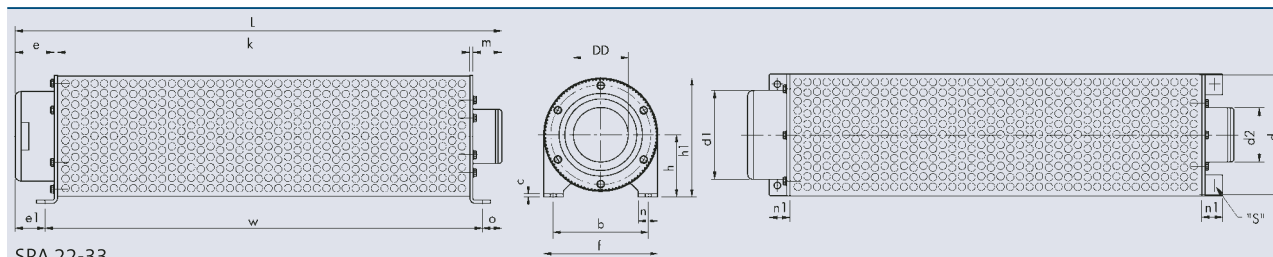


bar H(m)



Pump performance curves

Q(l/min)



SPA 22-33

	SPA 22-23	SPA 22-33	SPA 35-23	SPA 35-43	SPA 58-23	SPA 58-33	SPA 100-13
Dimensions (LxWxH) [mm]	680x225x229	888x225x229	898x225x229	1211x225x229	970x225x229	1150x225x229	1162x310x314
Voltage [V/Hz]	3 x 400/50						
Power output [kW]	1.10	2.20	2.20	4.0	3	5.50	5.50
Current [A]	2.75	6	6	9.6	7.85	13.60	13.60
b [mm]	189	189	189	189	189	189	274
c [mm]	4	4	4	4	4	4	4
DD (Rp) [inch]	2.5	2.5	3	3	3	3	5
d [mm]	225	225	225	225	225	225	310
d1 [mm]	131	131	131	131	141	150	186
d2 [mm]	95	95	95	95	95	138	138
e [mm]	80	80	80	80	100	100	120
e1 [mm]	57	57	57	57	77	77	97
f [mm]	229	229	229	229	229	229	314
h [mm]	123	123	123	123	123	123	165
h1 [mm]	237	237	237	237	237	237	322
k [mm]	500	500	500	750	750	750	750
L [mm]	680	888	898	1211	970	1150	1162
m [mm]	92	300	310	373	112	292	284
n [mm]	40	40	40	40	40	40	40
n1 [mm]	44	44	44	44	44	44	44
o [mm]	69	277	287	350	89	269	261
w [mm]	554	554	554	804	804	804	804
s [mm]	11	11	11	11	11	11	11
Cable length [m]	10						
Material	Stainless steel 1.4301 (AISI 304)						
Weight [kg]	20	28	28	37	31	54	66
Order no.	53834	53835	53839	53841	53845	53846	53852

	SPA 100-33	SPA 162-1-13	SPA 162-13	SPA 162-2-23	SPA 280-1-13	SPA 280-13	SPA 280-2-23
Dimensions (LxWxH) [mm]	1508x310x314	1165x310x314	1255x310x314	1441x310x314	1489x310x314	1544x310x314	1910x310x314
Voltage [V/Hz]	3x 400/50						
Power output [kW]	11	7.50	11	13	15	18.50	30
Current [A]	24.80	17.60	24.80	30	34	42	66.50
b [mm]	274	274	274	274	274	274	274
c [mm]	4	4	4	4	4	4	4
DD (Rp) [inch]	5	6	6	6	6	6	6
d [mm]	310	310	310	310	310	310	310
d1 [mm]	186	218	218	218	247	247	247
d2 [mm]	138	138	138	138	138	138	138
e [mm]	120	120	120	120	120	120	120
e1 [mm]	97	92	92	92	96	96	96
f [mm]	314	314	314	314	314	314	314
h [mm]	165	165	165	165	165	165	165
h1 [mm]	322	322	322	322	322	322	322
k [mm]	1000	750	750	1000	1000	1250	1500
L [mm]	1508	1165	1255	1441	1489	1544	1910
m [mm]	380	287	377	313	361	166	282
n [mm]	40	40	40	40	40	40	40
n1 [mm]	44	44	44	44	44	44	44
o [mm]	357	269	359	295	339	144	260
w [mm]	1054	804	804	1054	1054	1304	1554
s [mm]	11	11	11	11	11	11	11
Cable length [m]	10						
Material	Stainless steel 1.4301 (AISI 304)						
Weight [kg]	91	85	93	103	104	111	132
Order no.	53854	53858	53859	53860	53864	53865	53866